

Maxim DS1307 → MCP7940N Migration

Author: Eugen Ionescu
Microchip Technology Inc.

Note: The user should verify that the device oscillator starts and performs as expected. Adjusting the loading capacitor values and/or the oscillator mode may be required.

INTRODUCTION

This migration document describes how to replace the DS1307 RTCC with the MCP7940N RTCC.

Note: This device has been designed to perform to the parameters of its data sheet. It has been tested to an electrical specification designed to determine its conformance with these parameters. Due to process differences in the manufacture of this device, this device may have different performance characteristics than its earlier version. These differences may cause this device to perform differently in your application than the earlier version of this device.

The MCP7940N is an I²C™ RTCC device similar to the Maxim DS1307. The MCP7940N and DS1307 are both available in the standard 8-lead SOIC and PDIP packages.

[Table 1](#) shows considerations that must be taken into account when migrating from DS1307 to the MCP7940N.

TABLE 1: DS1307 – MCP7940N MIGRATION REQUIRED MODIFICATIONS

No.	Required changes	HW	SW	Section Reference
1	External load capacitors required	✓	—	Crystal Circuit
2	MCP7940N requires additional components for the battery backup circuit	✓	—	Battery Backup
3	The MCP7940N battery backup function is enabled by setting the VBATEN bit	—	✓	Battery Backup
4	MCP7940N can work on 100 kHz and 400 kHz I ² C™ frequency versus 100 kHz for DS1307	✓	✓	Configuring The I²C Bus
5	MCP7940N and DS1307 have different I ² C™ control bytes	—	✓	Device Addressing
6	The MCP7940N MFP pin (SQW/OUT on DS1307) has more functions: square-wave, alarms and firmware controlled output	—	✓	SQW/OUT Vs. MFP Functionality
7	SQW/OUT and MFP pins have opposite power-up states	—	✓	SQW/OUT Vs. MFP Functionality
8	The MCP7940N oscillator is enabled by a control bit with inverse polarity	—	✓	Starting the Oscillator
9	Additional control and Status bits in the Date and Time registers. SRAM address range changes	—	✓	Accessing the RTCC and SRAM Registers

Maxim DS1307 to MCP7940N Migration

TABLE 2: MCP7940N ADDITIONAL FEATURES

No.	Feature
1	64 bytes of SRAM battery backed; DS1307 has only 56 bytes.
2	On-chip digital trimming/calibration.
3	Two programmable alarms.
4	More package options: 8-lead SOIC, TSSOP, MSOP and 2x3 TDFN.
5	100 kHz and 400 kHz I ² C™ compatible.
6	Power-Fail Time-Stamp registers.
7	1 Kbit EEPROM (Note) and 64 bits unique ID location.
8	Leap year indication bit.
9	MCP940N is available in E-temp.
Note: Available only on MCP7941X.	

DS1307 and MCP7940N are electrically compatible. Although there are some differences between the two devices (shown in [Table 3](#)), these do not influence the migration process.

TABLE 3: ELECTRICAL DIFFERENCES BETWEEN MCP7940 AND DS1307

No.	Description	Symbol	Differences	
			MCP7940N	DS1307
1	Supply Voltage	VCC	Industrial (I): 1.8V-5.5V	4.5V-5.5V
2	VBAT Battery Voltage	VBAT	1.3-5.5V	2-3.5V
3	VBAT Change Over	VTRIP (VPF on DS1307)	Typ. 1.5V	Typ. 1.25 x VBAT
4	VBAT Current (VBAT = 3.0V)	IBAT	Typ. 700 nA	Typ. 500 nA
5	High-level input Voltage	VIH	Min. 0.7 x VCC	Min. 2.2V
6	Low-level input Voltage	VIL	Max. 0.3 x VCC	Max. 0.8V
7	Standby Current	Iccs	Max. 5 µA	Max. 200 µA
8	SCL Clock Frequency	fSCL	Max. 400 kHz	Max. 100 kHz
9	Active supply current	ICCA	Read: Max. 300 µA (400 kHz) Write: Max. 400 µA (400 kHz)	Max. 1.5 mA (100 kHz)
10	Crystal Selection	—	6-9 pF	12.5 pF

Maxim DS1307 to MCP7940N Migration

SCHEMATIC RECOMMENDATIONS

The differences between the schematics of MCP7940N and DS1307 are the load capacitors (CX1 and CX2) and the battery backup circuit.

The recommended connections for the MCP7940N and DS1307 devices are shown in [Figure 1](#) and [Figure 2](#).

FIGURE 1: RECOMMENDED CONNECTIONS FOR DS1307 DEVICES

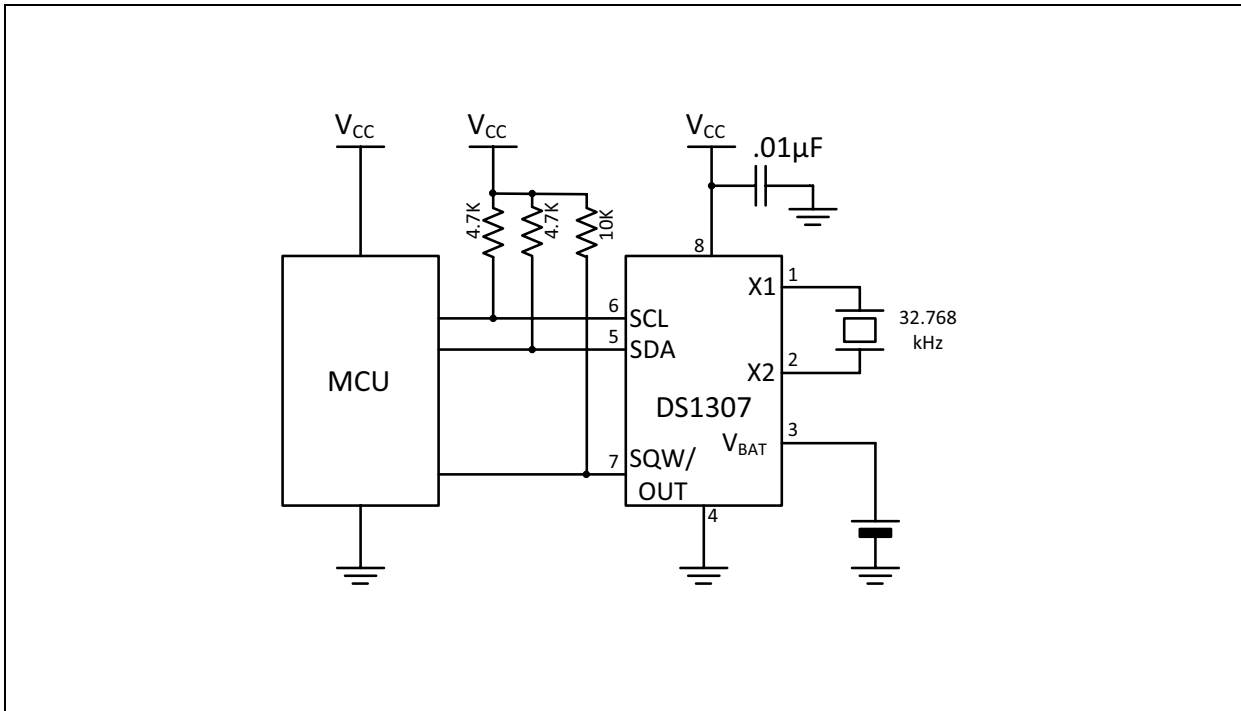
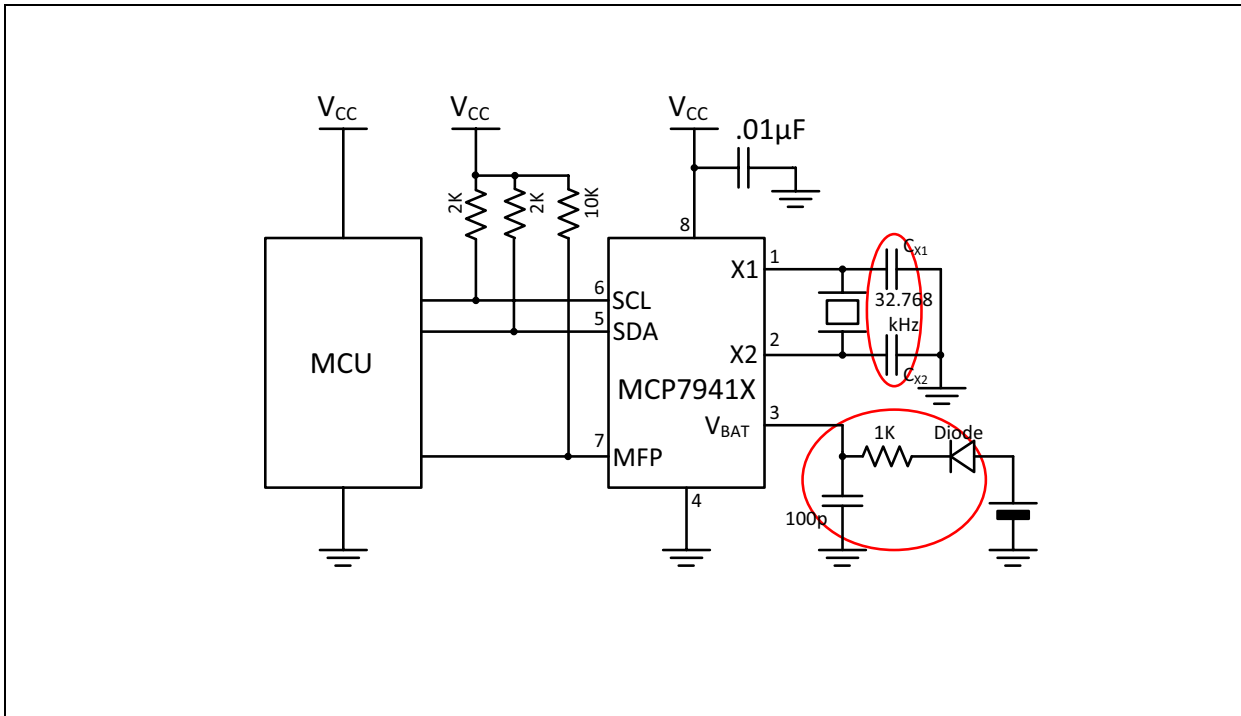


FIGURE 2: RECOMMENDED CONNECTIONS FOR MCP7940N DEVICES



Maxim DS1307 to MCP7940N Migration

CRYSTAL CIRCUIT

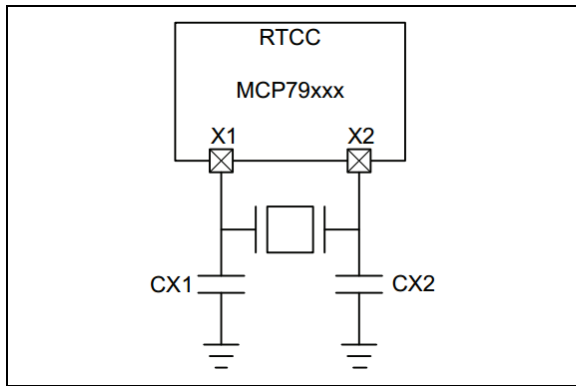
DS1307 is designed to use 32.768 kHz crystals with 12.5 pF load capacitance. The CX1 and CX2 capacitors are internal.

Figure 3 shows the MCP7940N schematic for the oscillator circuit (this device does not have internal load capacitors which must be included on the PCB). It has been designed to operate with a standard 32.768 kHz tuning fork crystal with a load capacitance of between 6-9 pF.

Microchip recommends several crystals for which MCP7940N works reliably. For more information please consult the following documents:

- AN1365, "Recommended Usage of Microchip Serial RTCC Devices" (DS01365)
- MCP7940N Data Sheet (DS25010)

FIGURE 3: OSCILLATOR DIAGRAM



BATTERY BACKUP

MCP7940N and DS1307 devices both have an automatic VCC switchover to VBAT, backup supply, to maintain the RTCC and SRAM during a VCC power fail.

The DS1307 battery backup feature is always enabled in hardware. On the MCP7940N, the battery backup feature is controlled by the VBATEN bit (bit 3) in the Day register (0x03). The VBATEN bit should be set to '1' to match the functionality of the DS1307.

Note: If the battery backup function is not enabled, the SRAM content will be lost and RTCC will be reset when VCC drops to VTRIP. If the device is operating in Battery Backup mode and the VBAT drops to the minimum voltage (see Table 3, VBAT parameter), the entire SRAM and RTCC data will no longer be preserved during power loss.

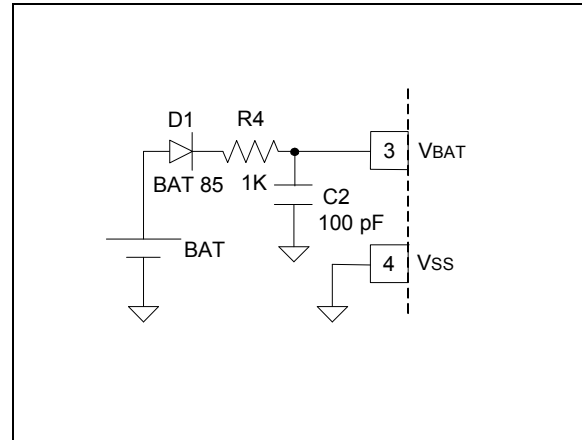
The MCP7940N and DS1307 are fully accessible through the serial interface while VCC is higher than VTRIP/VPF. These devices have different operating modes when VCC drops to VTRIP/VPF and when the backup supply voltage is higher than the supply voltage, VCC.

TABLE 4: VBAT vs. VCC

Device	Supply Condition	Serial Access	Powered By
DS1307	VCC > VPF	Yes	VCC
	VCC < VPF, VCC > VBAT	No	VCC
	VCC < VPF, VCC < VBAT	No	VBAT
	VCC > VBAT + 0.2V	No	VCC
MCP7940N	VCC > VTRIP	Yes	VCC
	VCC < VTRIP	No	VBAT

Note: The VTRIP parameter on MCP7940N is typically 1.5V. On DS1307, the VTRIP parameter is named VPF and is typically $1.25 \times VBAT$ ($VBAT = 3V$).

FIGURE 4: BATTERY BACKUP



When using any supply, it is recommended to include a 1K series resistor R4 and a 100 pF capacitor C2 between the supply and the VBAT pin (as seen in Figure 4). This is required to remove the spikes that can occur when switching from VCC to VBAT.

Additionally, a series diode D1 is recommended when using a battery to eliminate any current flowing into the cell during a catastrophic failure of the RTCC device. For more information, see AN1365, "Recommended Usage of Microchip Serial RTCC Devices" (DS01365).

Maxim DS1307 to MCP7940N Migration

CONFIGURING THE I²C BUS

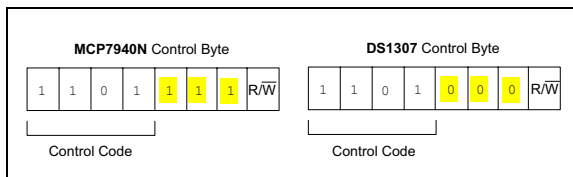
The MCP7940N is I²C 100 kHz and 400 kHz compatible (the DS1307 operates in the standard mode – 100 kHz – only). The SDA and SCL pins are open-drain terminals, therefore, they require pull-up resistors to V_{CC} (typically 10 kΩ for 100 kHz and 2 kΩ for 400 kHz).

If the 400 kHz frequency is used, the master device must be configured to communicate at this increased speed.

DEVICE ADDRESSING

The MCP7940N and DS1307 control byte are shown in Figure 5.

FIGURE 5: ADDRESS SEQUENCE BIT ASSIGNMENTS



The MCP7940N control byte for accessing the SRAM and RTCC registers is set to '1101111x' (0xDF for a read, 0xDE for a write). The RTCC registers and the SRAM share the same address space.

The control byte for DS1307 is different, '1101000x' (0xD0 for a write, 0xD1 for a read operation).

The Read/Write operations are identical for DS1307 and MCP7940N, only the control byte is different.

SQW/OUT vs. MFP FUNCTIONALITY

The SQW/OUT pin from the DS1307 is called MFP on the MCP7940N. It has compatible functionality and is still Pin 7 of the package.

SQW/OUT and MFP pins can be used to output a square-wave signal with a programmable frequency (1 Hz, 4 kHz, 8 kHz and 32 kHz) or toggled via the control bit, OUT. Additionally, the MFP pin from MCP7940N is asserted when the alarm is triggered.

On power-up, the SQW/OUT and MFP pins have a different default state polarity.

Device	Pin No.	Pin Name	Power-Up State
DS1307	7	SQW/OUT	Low
MCP7940N	7	MFP	High

Note: SQW/OUT is enabled when DS1307 is powered from V_{CC} or V_{BAT}. MFP is disabled when MCP7940N is powered from the V_{BAT} backup supply.

Maxim DS1307 to MCP7940N Migration

The MFP pin functionality is controlled by the Control register like SQW/OUT on DS1307.

TABLE 5: DS1307 AND MCP7940N CONTROL REGISTER

Device	Address	Bit 7	Bit 6	Bit 5	Bit 4	Bit 3	Bit 2	Bit 1	Bit 0	Reset State
DS1307	07h	OUT	0	0	SQWE	0	0	RS1	RS0	01h
MCP7940N	07h	OUT	SQWE	ALM1	ALM0	EXTOSC	RS2	RS1	RS0	80h

Note: Set the ALM1, ALM0, RS2 and EXTOSC to '0', to match with the DS1307 functionality.

The Control register is mapped at the same address, 07h, for MCP7940N and DS1307. Below is a description of each bit from the Control register:

- Bit 7 is the OUT bit: sets the logic level on the MFP when not using this as a square-wave output (MFP = 1 if OUT = 1 and MFP = 0 if OUT = 0)
- Bit 6 is the SQWE bit (bit 4 on DS1307): setting this bit enables the divided output from the crystal oscillator
- Bit 5:4 are ALM1:ALM0 bits: determine which alarms are active

- Bit 3 is the EXTOSC bit: setting this bit will allow an external 32.768 kHz signal to drive the RTCC registers, eliminating the need for an external crystal
- Bit 2:0 are RS2:RS0 bits: sets the internal divider for the 32.768 kHz oscillator to be driven to the MFP (1 Hz, 4 kHz, 8 kHz and 32 kHz for RS2 = 0, 64 Hz for RS2 = 1)

When migrating from DS1307 to MCP7940N, the Control register can be set, as shown in [Example 1](#).

EXAMPLE 1:

```
DS1307_Control_Register = DS1307_SQWE | SQW_OUT_1Hz; // Control Register = 0x10
// (DS1307_SQWE = 0x10), (SQW_OUT_1Hz = 0x00)
MCP7940N_Control_register = MCP7940N_SQWE | MFP_1Hz; // Control Register = 0x40
// (MCP7940N_SQWE = 0x40, MFP_1Hz = 0x00)

// SQWE bit = 1: enable square-wave function on MFP pin
// RS2:RS0 bits = 0: the frequency for the square-wave signal is 1 Hz
```

For more information, please refer to the MCP7940N Data Sheet (DS25010).

Maxim DS1307 to MCP7940N Migration

STARTING THE OSCILLATOR

The oscillator in both the RTCC's are enabled by a control bit, but the polarity varies between the devices. The enable is bit 7 in the Seconds register (0x00).

Device	Bit Name	State	Reset State
DS1307	CH	1 = disable oscillator 0 = enable oscillator	1
MCP7940N	ST	1 = enable oscillator 0 = disable oscillator	0

ACCESSING THE RTCC AND SRAM REGISTERS

The Date and Time registers are mapped on MCP7940N the same as DS1307 (from 00h to 07h address) with several differences that will be described below.

The SECONDS, MINUTES, HOUR, DATE and YEAR registers are mapped identically on the MCP7940N and DS1307.

The DAY register on MCP7940N contains the BCD day and additional bits for configuration and status (not present in the DS1307). The VBATEN bit (bit 3) is used

to enable/disable the battery backup. The VBAT bit (bit 4) is set by hardware when the VCC falls and is cleared by firmware. The OSCON bit (bit 5) is set and cleared by hardware, indicating if the oscillator is currently running or not. This is a read-only bit.

The MONTH register has an additional bit, LP (bit 5), which indicates if the current year is a leap one. This is a read-only bit.

Care should be taken when the Date and Time registers are read or written. A number of the unimplemented "don't care" bits on DS1307, which read as '0', are used on MCP7940N as control and status bits (they are highlighted in [Table 6](#)).

EXAMPLE 2: READ THE DAY FROM MCP7940N

```
DAY_REGISTER & 0x07    =    Day // Mask off
                           control and status
                           bits
```

EXAMPLE 3: READ THE MONTH FROM MCP7940N

```
(MONTH_REGISTER & 0x10) * 10 +
(MONTH_REGISTER & 0x0F)      =    Month
```

TABLE 6: DATE AND TIME REGISTER MAP

Address	Bit 7	Bit 6	Bit 5	Bit 4	Bit 3	Bit 2	Bit 1	Bit 0	Function	Range	Reset State
Time Registers											
00h	ST	10 Seconds			Seconds			Seconds	00-59	00h	
01h		10 Minutes			Minutes			Minutes	00-59	00h	
02h		12/24	10 Hour AM/PM	10 Hour	Hour			Hours	1-12 + AM/PM 00-23	00h	
03h		OSCON ^(Note)		VBAT ^(Note)	VBATEN	Day		Day	1-7	01h	
04h		10 Date			Date			Date	01-31	01h	
05h		LP ^(Note)		10 Month	Month			Month	01-12	01h	
06h	10 Year				Year			Year	00-99	01h	

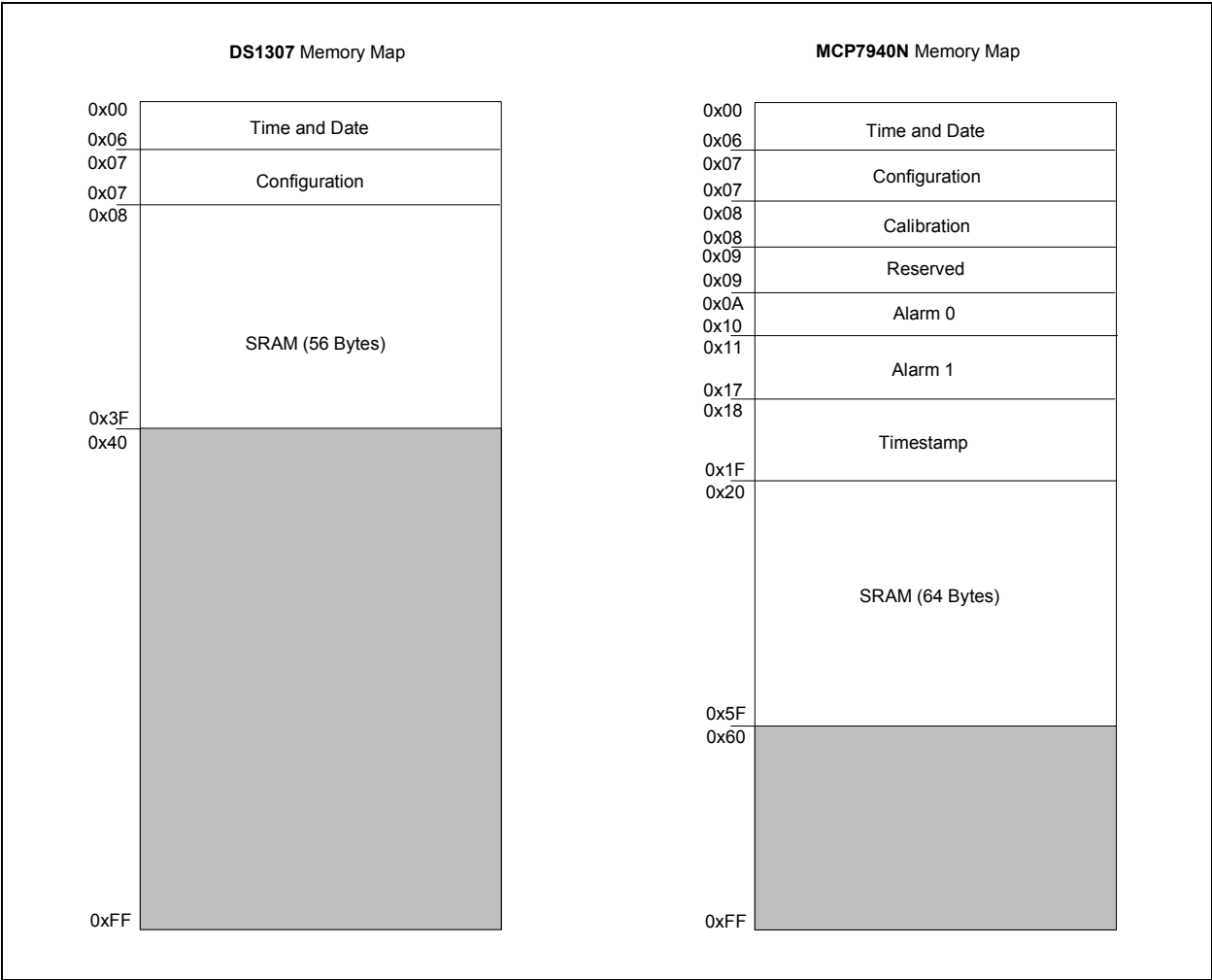
Note: The OSCON, VBAT and LP bits are read-only.

Note: The shaded areas are not implemented and read as '0'.

Maxim DS1307 to MCP7940N Migration

Differences between the DS1307 and MCP7940N memory maps are shown in [Figure 6](#).

FIGURE 6: DS1307 AND MCP7940N MEMORY MAP



On DS1307, the 56 bytes of RAM are located in address locations from 08h to 3Fh. These memory locations are used on MCP7940N by the calibration alarms and time-stamp registers.

On MCP7940N, the 64 bytes of RAM are located in address locations 20h to 5Fh.

Note the following details of the code protection feature on Microchip devices:

- Microchip products meet the specification contained in their particular Microchip Data Sheet.
- Microchip believes that its family of products is one of the most secure families of its kind on the market today, when used in the intended manner and under normal conditions.
- There are dishonest and possibly illegal methods used to breach the code protection feature. All of these methods, to our knowledge, require using the Microchip products in a manner outside the operating specifications contained in Microchip's Data Sheets. Most likely, the person doing so is engaged in theft of intellectual property.
- Microchip is willing to work with the customer who is concerned about the integrity of their code.
- Neither Microchip nor any other semiconductor manufacturer can guarantee the security of their code. Code protection does not mean that we are guaranteeing the product as "unbreakable."

Code protection is constantly evolving. We at Microchip are committed to continuously improving the code protection features of our products. Attempts to break Microchip's code protection feature may be a violation of the Digital Millennium Copyright Act. If such acts allow unauthorized access to your software or other copyrighted work, you may have a right to sue for relief under that Act.

Information contained in this publication regarding device applications and the like is provided only for your convenience and may be superseded by updates. It is your responsibility to ensure that your application meets with your specifications. MICROCHIP MAKES NO REPRESENTATIONS OR WARRANTIES OF ANY KIND WHETHER EXPRESS OR IMPLIED, WRITTEN OR ORAL, STATUTORY OR OTHERWISE, RELATED TO THE INFORMATION, INCLUDING BUT NOT LIMITED TO ITS CONDITION, QUALITY, PERFORMANCE, MERCHANTABILITY OR FITNESS FOR PURPOSE. Microchip disclaims all liability arising from this information and its use. Use of Microchip devices in life support and/or safety applications is entirely at the buyer's risk, and the buyer agrees to defend, indemnify and hold harmless Microchip from any and all damages, claims, suits, or expenses resulting from such use. No licenses are conveyed, implicitly or otherwise, under any Microchip intellectual property rights.

Trademarks

The Microchip name and logo, the Microchip logo, dsPIC, FlashFlex, KEELOQ, KEELOQ logo, MPLAB, PIC, PICmicro, PICSTART, PIC³² logo, rPIC, SST, SST Logo, SuperFlash and UNI/O are registered trademarks of Microchip Technology Incorporated in the U.S.A. and other countries.

FilterLab, Hampshire, HI-TECH C, Linear Active Thermistor, MTP, SEEVAL and The Embedded Control Solutions Company are registered trademarks of Microchip Technology Incorporated in the U.S.A.

Silicon Storage Technology is a registered trademark of Microchip Technology Inc. in other countries.

Analog-for-the-Digital Age, Application Maestro, BodyCom, chipKIT, chipKIT logo, CodeGuard, dsPICDEM, dsPICDEM.net, dsPICworks, dsSPEAK, ECAN, ECONOMONITOR, FanSense, HI-TIDE, In-Circuit Serial Programming, ICSP, Mindi, MiWi, MPASM, MPF, MPLAB Certified logo, MPLIB, MPLINK, mTouch, Omniclient Code Generation, PICC, PICC-18, PICDEM, PICDEM.net, PICkit, PICTail, REAL ICE, rLAB, Select Mode, SQL, Serial Quad I/O, Total Endurance, TSHARC, UniWinDriver, WiperLock, ZENA and Z-Scale are trademarks of Microchip Technology Incorporated in the U.S.A. and other countries.

SQTP is a service mark of Microchip Technology Incorporated in the U.S.A.

GestIC and ULPP are registered trademarks of Microchip Technology Germany II GmbH & Co. KG, a subsidiary of Microchip Technology Inc., in other countries.

All other trademarks mentioned herein are property of their respective companies.

© 2013, Microchip Technology Incorporated, Printed in the U.S.A., All Rights Reserved.



Printed on recycled paper.

ISBN: 9781620770566

QUALITY MANAGEMENT SYSTEM
CERTIFIED BY DNV
= ISO/TS 16949 =

Microchip received ISO/TS-16949:2009 certification for its worldwide headquarters, design and wafer fabrication facilities in Chandler and Tempe, Arizona; Gresham, Oregon and design centers in California and India. The Company's quality system processes and procedures are for its PIC® MCUs and dsPIC® DSCs, KEELOQ® code hopping devices, Serial EEPROMs, microperipherals, nonvolatile memory and analog products. In addition, Microchip's quality system for the design and manufacture of development systems is ISO 9001:2000 certified.

Worldwide Sales and Service

AMERICAS

Corporate Office
2355 West Chandler Blvd.
Chandler, AZ 85224-6199
Tel: 480-792-7200
Fax: 480-792-7277
Technical Support:
<http://www.microchip.com/support>
Web Address:
www.microchip.com

Atlanta
Duluth, GA
Tel: 678-957-9614
Fax: 678-957-1455

Boston
Westborough, MA
Tel: 774-760-0087
Fax: 774-760-0088

Chicago
Itasca, IL
Tel: 630-285-0071
Fax: 630-285-0075

Cleveland
Independence, OH
Tel: 216-447-0464
Fax: 216-447-0643

Dallas
Addison, TX
Tel: 972-818-7423
Fax: 972-818-2924

Detroit
Farmington Hills, MI
Tel: 248-538-2250
Fax: 248-538-2260

Indianapolis
Noblesville, IN
Tel: 317-773-8323
Fax: 317-773-5453

Los Angeles
Mission Viejo, CA
Tel: 949-462-9523
Fax: 949-462-9608

Santa Clara
Santa Clara, CA
Tel: 408-961-6444
Fax: 408-961-6445

Toronto
Mississauga, Ontario,
Canada
Tel: 905-673-0699
Fax: 905-673-6509

ASIA/PACIFIC

Asia Pacific Office
Suites 3707-14, 37th Floor
Tower 6, The Gateway
Harbour City, Kowloon
Hong Kong
Tel: 852-2401-1200
Fax: 852-2401-3431

Australia - Sydney
Tel: 61-2-9868-6733
Fax: 61-2-9868-6755

China - Beijing
Tel: 86-10-8569-7000
Fax: 86-10-8528-2104

China - Chengdu
Tel: 86-28-8665-5511
Fax: 86-28-8665-7889

China - Chongqing
Tel: 86-23-8980-9588
Fax: 86-23-8980-9500

China - Hangzhou
Tel: 86-571-2819-3187
Fax: 86-571-2819-3189

China - Hong Kong SAR
Tel: 852-2943-5100
Fax: 852-2401-3431

China - Nanjing
Tel: 86-25-8473-2460
Fax: 86-25-8473-2470

China - Qingdao
Tel: 86-532-8502-7355
Fax: 86-532-8502-7205

China - Shanghai
Tel: 86-21-5407-5533
Fax: 86-21-5407-5066

China - Shenyang
Tel: 86-24-2334-2829
Fax: 86-24-2334-2393

China - Shenzhen
Tel: 86-755-8864-2200
Fax: 86-755-8203-1760

China - Wuhan
Tel: 86-27-5980-5300
Fax: 86-27-5980-5118

China - Xian
Tel: 86-29-8833-7252
Fax: 86-29-8833-7256

China - Xiamen
Tel: 86-592-2388138
Fax: 86-592-2388130

China - Zhuhai
Tel: 86-756-3210040
Fax: 86-756-3210049

ASIA/PACIFIC

India - Bangalore
Tel: 91-80-3090-4444
Fax: 91-80-3090-4123

India - New Delhi
Tel: 91-11-4160-8631
Fax: 91-11-4160-8632

India - Pune
Tel: 91-20-2566-1512
Fax: 91-20-2566-1513

Japan - Osaka
Tel: 81-6-6152-7160
Fax: 81-6-6152-9310

Japan - Tokyo
Tel: 81-3-6880-3770
Fax: 81-3-6880-3771

Korea - Daegu
Tel: 82-53-744-4301
Fax: 82-53-744-4302

Korea - Seoul
Tel: 82-2-554-7200
Fax: 82-2-558-5932 or
82-2-558-5934

Malaysia - Kuala Lumpur
Tel: 60-3-6201-9857
Fax: 60-3-6201-9859

Malaysia - Penang
Tel: 60-4-227-8870
Fax: 60-4-227-4068

Philippines - Manila
Tel: 63-2-634-9065
Fax: 63-2-634-9069

Singapore
Tel: 65-6334-8870
Fax: 65-6334-8850

Taiwan - Hsin Chu
Tel: 886-3-5778-366
Fax: 886-3-5770-955

Taiwan - Kaohsiung
Tel: 886-7-213-7828
Fax: 886-7-330-9305

Taiwan - Taipei
Tel: 886-2-2508-8600
Fax: 886-2-2508-0102

Thailand - Bangkok
Tel: 66-2-694-1351
Fax: 66-2-694-1350

EUROPE

Austria - Wels
Tel: 43-7242-2244-39
Fax: 43-7242-2244-393

Denmark - Copenhagen
Tel: 45-4450-2828
Fax: 45-4485-2829

France - Paris
Tel: 33-1-69-53-63-20
Fax: 33-1-69-30-90-79

Germany - Munich
Tel: 49-89-627-144-0
Fax: 49-89-627-144-44

Italy - Milan
Tel: 39-0331-742611
Fax: 39-0331-466781

Netherlands - Druenen
Tel: 31-416-690399
Fax: 31-416-690340

Spain - Madrid
Tel: 34-91-708-08-90
Fax: 34-91-708-08-91

UK - Wokingham
Tel: 44-118-921-5869
Fax: 44-118-921-5820