

Zero-Cross Detection Module Technical Brief

Author: Mike Gomez
Microchip Technology Inc.

INTRODUCTION

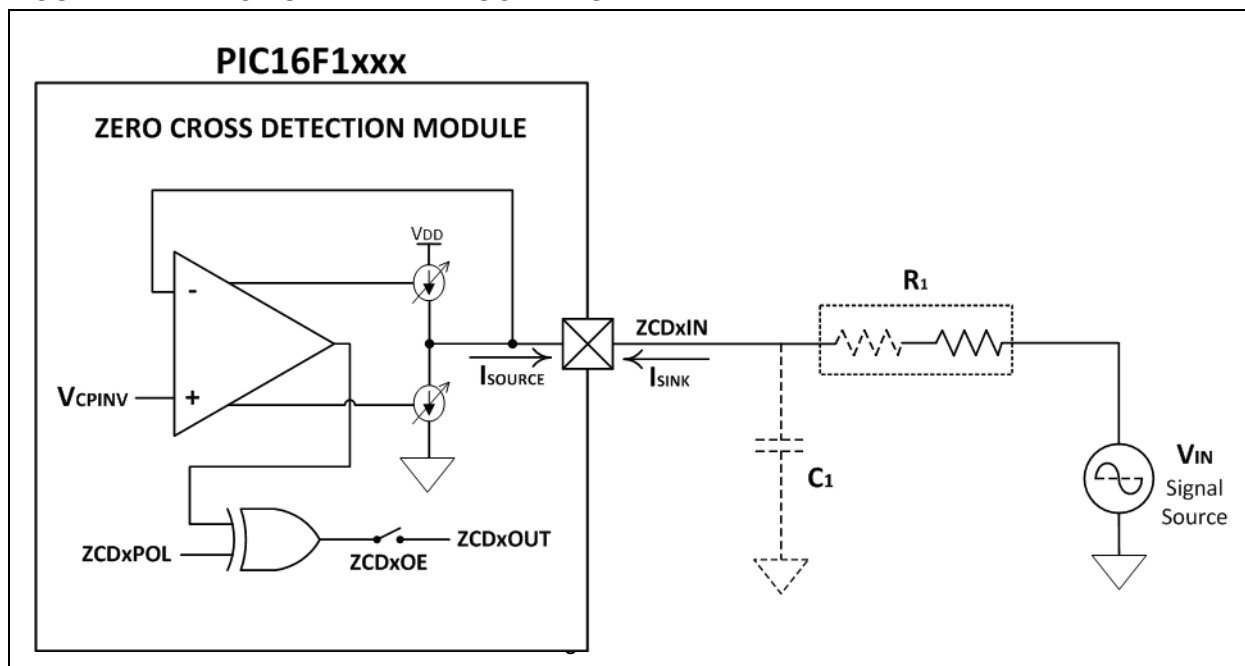
In earlier 8-bit PIC[®] microcontroller devices, the Zero-Cross Detection (ZCD) of high input voltage, such as the A/C line voltage, relies in the clamping ability of the parasitic electrostatic discharge ESD protection diode on the I/O pin. This method has been used successfully for many years. However, in the advent of recent microcontroller devices with additional analog pass-gates forbid the I/O pins voltage to exceed VDD and thus the conduction of parasitic ESD diode. Violating this specification may cause an unexpected behavior of the microcontroller. Refer to Microchip's Technical Brief TB3013 "Using ESD Parasitic Diodes on Mixed Signal Microcontrollers" (DS90003013) for more details about pass-gates and their roles in reducing the possibilities of using the voltage clamping ability of the parasitic ESD diode on the I/O pins.

For these reasons, Microchip provides a dedicated Zero-Cross Detection (ZCD) module on its 8-bit microcontroller devices. This module can detect zero crossing accurately, while preventing the parasitic ESD diode to conduct when interfacing with the high-voltage A/C input signals. This technical brief describes the ZCD module features, the method of configuration and the calculation of external components needed for the implementation.

ZCD OPERATING CIRCUIT

Figure 1 shows a simplified schematic diagram for the implementation of the ZCD module. The source signal V_{IN} can be measured by the module through a series current-limiting resistor R_1 . To safely interface V_{IN} to the module's input pin (ZCDxIN), R_1 impedance must be carefully chosen to limit the input current to a value that the module can tolerate. The peak current that can be sourced or sunk in ZCDxIN is 300 μA . Refer to Equation 1 for selecting the R_1 value.

FIGURE 1: ZCD SIMPLIFIED BLOCK DIAGRAM



EQUATION 1: ZCD CURRENT-LIMITING RESISTOR CALCULATION

$$R_1 = \frac{V_{IN(PEAK)}}{300 \mu A}$$

The high-frequency noise signals from the external source can affect the module's operation at near zero-crossing point. To prevent these unwanted signals from causing chatter in the module's output (ZCDxOUT), an optional capacitor C_1 can be placed across ZCDxIN to form a simple low-pass filter with R_1 . However, this additional capacitor may lag the input signal and trigger a phase delay. Equation 2 shows the equation of the phase delay where F_C is the cut-off frequency of the desired input signal and R_1 is the calculated current-limiting resistor. Based on the equation, the higher the value of C_1 , the more it increases the phase delay (see Example 1). Therefore, the designer should choose an appropriate value for C_1 to meet the acceptable phase delay, based on their design tolerance.

EQUATION 2: PHASE DELAY EQUATION

$$T_{DELAY} = \frac{\tan^{-1}(2\pi \times F_C \times R_1 \times C_1)}{2\pi \times F_C}$$

EXAMPLE 1: PHASE DELAY CALCULATION BASED ON THE VALUE OF C1

Time Delay of 110V AC, 60 Hz input source when C_1 is 30 pF and 30 nF:

$$(1) \quad R_1 = \frac{V_{IN(PEAK)}}{300\mu A} = \frac{110V \times \sqrt{2}}{300\mu A} = 518.5 \text{ k}\Omega$$

When $C_1=30$ pF:

$$(2) \quad T_{DELAY} = \frac{\tan^{-1}(2\pi \times 60 \times 518.5 \text{ k}\Omega \times 30 \text{ nF})}{2\pi \times 60} = 15.5 \mu s$$

When $C_1=30$ nF:

$$(2) \quad T_{DELAY} = \frac{\tan^{-1}(2\pi \times 60 \times 518.5 \text{ k}\Omega \times 30 \text{ nF})}{2\pi \times 60} = 3.71 \text{ ms}$$

As stated earlier, the device I/O pin's parasitic ESD protection diode must not conduct while detecting the zero crossing of the A/C input signal. In order for the module to meet this requirement, the module applies a current source or sink to ZCDxIN. When V_{IN} is greater than the zero-crossing reference voltage (V_{CPINV}), which is typically 0.75V above ground, the module sinks current. When V_{IN} is less than V_{CPINV} , the

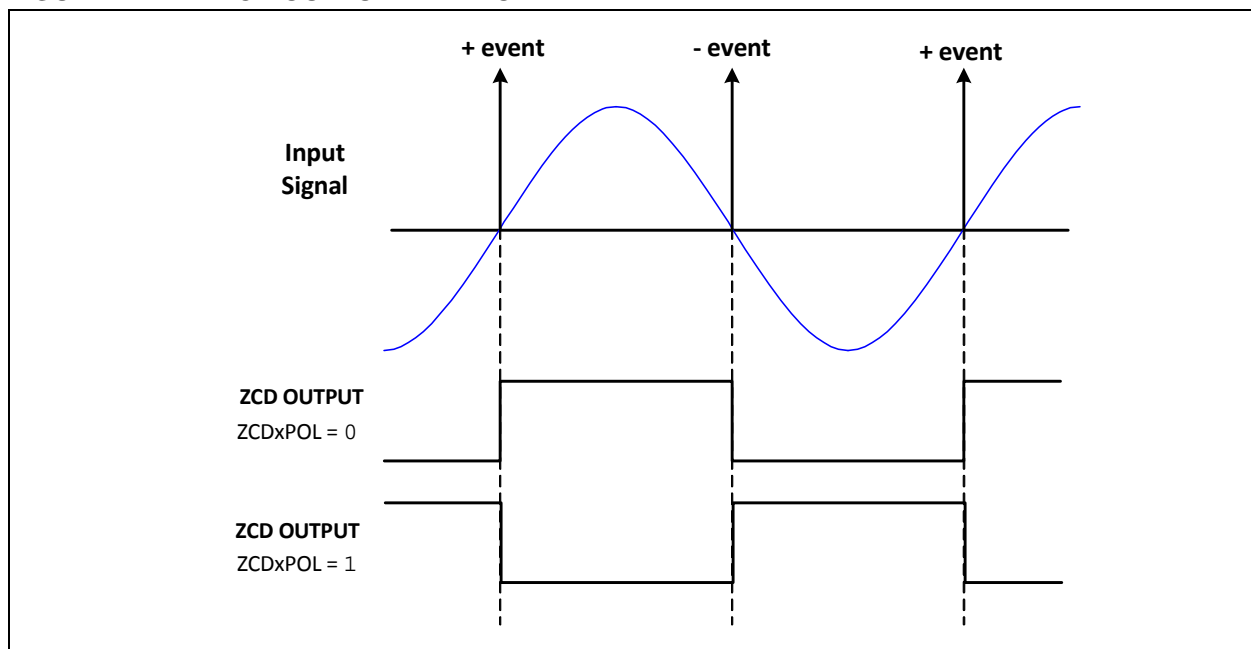
module sources current. The current source and sink action keep the ZCDxIN pin voltage constant over the full-range V_{IN} while the detection of zero crossing happens when the current through ZCDxIN changes direction.

The module includes a Status bit through the ZCDxOUT bit to determine whether the current source or the sink is active. When the ZCDxOUT bit is set, the ZCDxIN pin is sinking current and when cleared, the ZCDxIN pin is sourcing current. This bit can also be affected by the ZCD Logic Output Polarity (ZCDxPOL) bit relative to the current source and sink output. When ZCDxPOL is set, the polarity of ZCDxOUT is reversed, as shown in [Figure 2](#).

Note: Internal weak pull-up on ZCDxIN (if available in the device) should be disabled so that it will not interfere with the current source/sink action.

The ZCD interrupt can be generated based on the ZCDxOUT bit and if the associated enable bits are set. When the Positive Edge Interrupt (ZCDxINTP) bit is set and the ZCDxOUT bit changes from logic low to high, the ZCD interrupt will be triggered. Likewise, when the Negative Edge Interrupt (ZCDxINTN) bit is set and the ZCDxOUT bit changes from logic high to low, the ZCD interrupt will also be triggered.

FIGURE 2: ZCD OUTPUT WAVEFORM



ZCD EVENT OFFSET

The ZCD triggers at V_{CPINV} and not at 0V. Assuming that V_{IN} is sinusoidal and relative to the V_{SS} pin, the voltage offset from zero to V_{CPINV} causes the zero-cross event to occur too early as the V_{IN} waveform falls, and too late as the V_{IN} waveform rises. The actual offset time produced can be calculated using [Equation 3](#). Refer to [Example 2](#) for the example ZCD event offset calculation.

EQUATION 3: ZCD EVENT OFFSET EQUATION

$$T_{OFFSET} = \frac{\sin^{-1}\left(\frac{V_{CPINV} - V_{Desired\ Reference}}{V_{PEAK}}\right)}{2\pi \times Frequency}$$

EXAMPLE 2: ZCD EVENT OFFSET EXAMPLE CALCULATION

Input AC voltage at 110 VRMS with 60 Hz frequency and desired threshold of 0V:

$$(3) \quad T_{OFFSET} = \frac{\sin^{-1}\left(\frac{750\text{ mV} - 0V}{110 \times \sqrt{2}}\right)}{2\pi \times 60\text{ Hz}} = 12.7886\text{ }\mu\text{S}$$

Equation 3 is derived from the instantaneous voltage of a sine wave, as seen in Equation 4. The product of angular velocity, ω , and the instant time t determines the angular measurement or the position of the instantaneous voltage $v(t)$ at a given time. In detecting the zero cross, the $v(t)$ value of interest is near zero voltage or approaching zero voltage, therefore the angular measurement will be relatively

small. Since the angle is small, the calculation of $\sin(\omega t)$ will be approximately equal to ωt (small-angle approximation of sine functions). In this case, Equation 3 can be further reduced to Equation 5. Recalculating the given values in Example 2 using Equation 5 will arrive at approximately the same result, as seen in Example 3.

EQUATION 4: INSTANTANEOUS VOLTAGE EQUATION

$$v(t) = V_{PEAK} \times \sin(\omega t)$$

where: $\omega = 2\pi f$

EQUATION 5: SIMPLIFIED ZCD EVENT OFFSET EQUATION

$$T_{OFFSET} = \frac{V_{CPINV} - V_{Desired\ Reference}}{V_{PEAK} \times 2\pi \times Frequency}$$

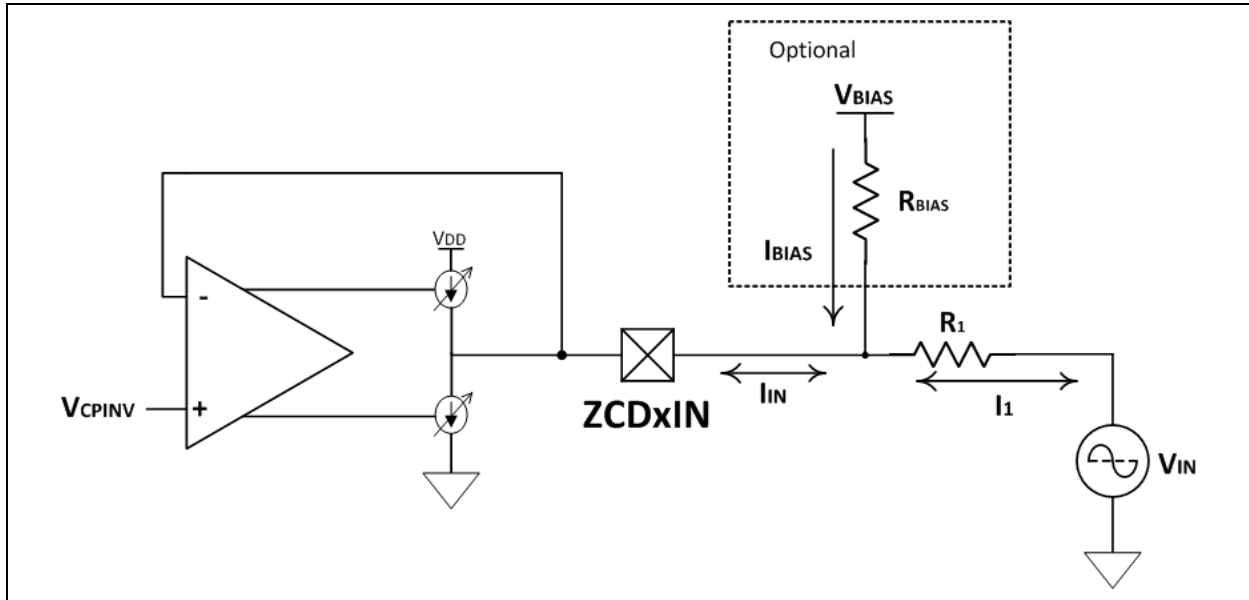
EXAMPLE 3: SIMPLIFIED EVENT OFFSET EXAMPLE CALCULATION

$$(5) \quad T_{OFFSET} = \frac{750\text{ mV} - 0V}{110 \times \sqrt{2} \times 2\pi \times 60\text{ Hz}} = 12.7885\text{ }\mu\text{S}$$

OPTIONAL BIASING RESISTOR

The ZCD event offset described in the previous section can be compensated by adding an optional external bias resistor (see Figure 3). The bias resistor can alter the VCPINV detection threshold to 0V or to any desired set point.

FIGURE 3: OPTIONAL BIASING RESISTOR



The purpose of the external biasing resistor (R_{BIAS}) is to provide a current (I_{BIAS}) that is equal to the current flowing through the current-limiting resistor (I_1) at the desired threshold of detection ($V_{Desired\ Reference}$). Therefore, when the input voltage is equal to $V_{Desired\ Reference}$, the total input current (I_{IN}) that will be produced at the node will be equal to zero, thus leaving no current entering the ZCDxIN.

In Figure 3, I_{IN} is the combination of the current I_1 and I_{BIAS} (see Equation 6). I_1 and I_{BIAS} can be replaced by their equivalent voltage-resistor equations to calculate the I_{IN} , as seen in Equation 7. Simplifying Equation 7 by replacing I_{IN} with 300 μA and rearranging the

equation to find R_1 , the R_1 value is obtained (see Equation 8). Now that R_1 is already determined, the voltage-resistor equivalent of I_{BIAS} from Equation 7 can be used to find I_{BIAS} , as seen in Equation 9. Finally, the value of R_{BIAS} can be determined using the calculated I_{BIAS} value, as shown in Equation 10.

EQUATION 6: TOTAL INPUT CURRENT EQUATION

$$I_{IN} = I_{BIAS} + I_1$$

EQUATION 7: SIMPLIFIED TOTAL INPUT CURRENT EQUATION

$$I_{IN} = \frac{V_{CPINV} - V_{Desired\ Reference}}{R_1} + \frac{V_{IN_PEAK} - V_{CPINV}}{R_1} = \frac{V_{IN_PEAK} - V_{Desired\ Reference}}{R_1}$$

EQUATION 8: R_1 EQUATION

$$R_1 = \frac{V_{IN_PEAK} - V_{Desired\ Reference}}{I_{IN}} = \frac{V_{IN_PEAK} - V_{Desired\ Reference}}{300\ \mu A}$$

EQUATION 9: I_{BIAS} EQUATION

$$I_{BIAS} = \frac{V_{CPINV} - V_{Desired\ Reference}}{R_1}$$

EQUATION 10: R_{BIAS} EQUATION

$$R_{BIAS} = \frac{V_{BIAS} - V_{CPINV}}{I_{BIAS}}$$

For a given V_{IN} of 110 V_{RMS} and V_{BIAS} of 5V, [Example 4](#) shows the calculation of R_{BIAS} and R₁ when the detection threshold is set at 0V.

EXAMPLE 4: SAMPLE EXTERNAL BIASING RESISTOR CALCULATION

$$V_{IN_PEAK} = V_{RMS} \times \sqrt{2} = 110V \times \sqrt{2} = 155.5V$$

$$(7) I_{IN} = \frac{750\text{ mV} - 0V}{R_1} + \frac{155.5V - 750\text{ mV}}{R_1} = \frac{155.5V + 0V}{R_1}$$

$$(8) R_1 = \frac{155.5V - 0V}{300\text{ }\mu A} = 518.5\text{ k}\Omega$$

$$(9) I_{BIAS} = \frac{750\text{ mV} - 0V}{518.5\text{ k}\Omega} = 1.44\text{ }\mu A$$

$$(10) R_{BIAS} = \frac{5V - 750\text{ mV}}{1.44\text{ }\mu A} = 2.9\text{ M}\Omega$$

Using the calculated R₁ and R_{BIAS} values in [Example 4](#), the total current flowing through ZCDxIN can be determined. [Example 5](#) shows the input current value based on the transition of the input source V_{IN} from the positive to the negative cycle. If the V_{IN} is at

the desired detection threshold, the total input current should be equal to zero for the ZCD module to toggle state. This is to check if the R₁ and R_{BIAS} values are correct.

EXAMPLE 5: CHECKING FOR THE RESISTOR VALUES

$$(7) I_{IN} = \left(\frac{V_{BIAS} - V_{CPINV}}{R_{BIAS}} \right) + \left(\frac{V_{IN} - V_{CPINV}}{R_1} \right)$$

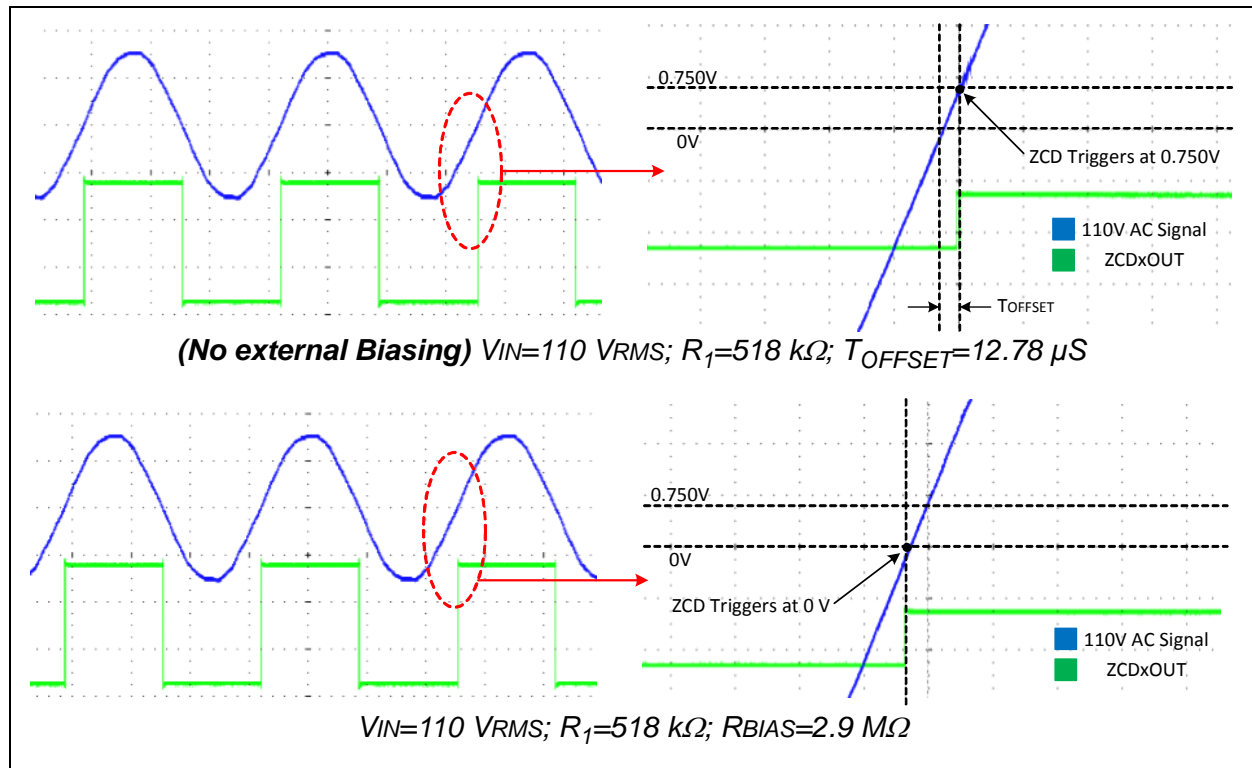
$$\text{At } V_{IN} = 155.5\text{ V}_{PEAK}: I_{IN} = \left(\frac{5 - 0.75}{2.9\text{ M}\Omega} \right) + \left(\frac{155.5 - 0.75}{518.5\text{ k}\Omega} \right) \approx 300\text{ }\mu A$$

$$\text{At } V_{IN} = 0V: I_{IN} = \left(\frac{5 - 0.75}{2.9\text{ M}\Omega} \right) + \left(\frac{0 - 0.75}{518.5\text{ k}\Omega} \right) \approx 0\text{ }\mu A \quad (\text{ZCD will switch state})$$

$$\text{At } V_{IN} = -155.5\text{ V}_{PEAK}: I_{IN} = \left(\frac{5 - 0.75}{2.9\text{ M}\Omega} \right) + \left(\frac{-155.5 - 0.75}{518.5\text{ k}\Omega} \right) \approx -300\text{ }\mu A$$

Figure 4 shows the actual generated ZCD output signal based on Example 4.

FIGURE 4: ZCD OUTPUT



CONFIGURATION BIT

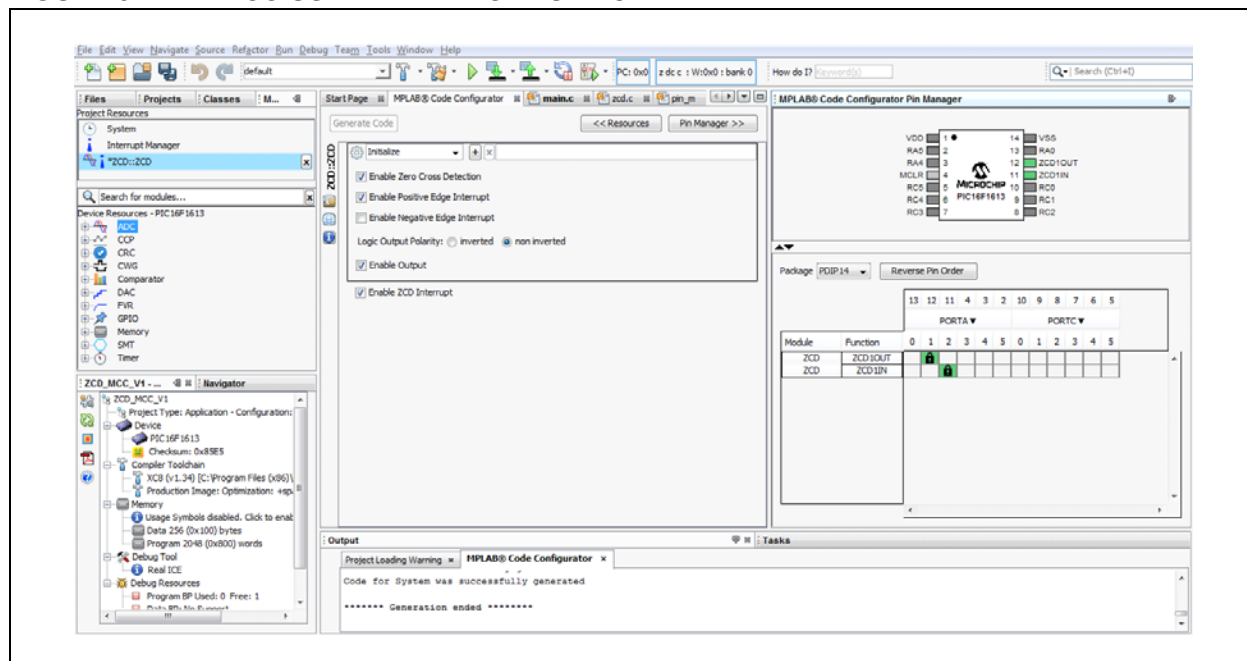
The ZCD module can be permanently enabled upon power-up by clearing the ZCD Disable bit (ZCDDIS/ZCD) in the Configuration Word. Clearing this bit ensures that ZCDxIN will be kept at a regulated and safe voltage as soon as the device is powered on. Therefore, ZCDxIN cannot be multiplexed with any other functionality. However, when ZCDDIS/ZCD is set, the ZCD can be enabled or disabled during firmware runtime by setting or clearing the Zero-Cross Enable (ZCDxEN) bit, respectively.

IMPLEMENTING ZCD USING MICROCHIP'S MPLAB® CODE CONFIGURATOR (MCC)

In this section, MPLAB® Code Configurator (MCC) is utilized to easily configure the ZCD module. The MCC is a user-friendly plug-in tool for MPLAB® X IDE which generates drivers for controlling and driving peripherals of PIC microcontrollers, based on the settings and selections made in its Graphical User Interface (GUI). Refer to the “MPLAB® Code Configurator User's Guide” (DS40001725) (http://www.microchip.com/pagehandler/en_us/devtools/code_configurator/home.html) for further information on how to install and setup the MCC in MPLAB X IDE. The following steps will guide on how to configure the ZCD module in PIC16F1613 using MCC:

1. Navigate to: “*Tools> Embedded> MPLAB Code Configurator*” to launch the MCC.
2. Set the desired Configuration registers and the system clock source on the System label inside of MPLAB X under the Project Resources window.
3. Under the Device Resources panel, expand ZCD and then double-click on **ZCD::ZCD** to bring the module up to the Project Resources panel.
4. In the center panel, after clicking the **ZCD::ZCD** in the Project Resources panel, check the Enable Zero-Cross Detection and Enable Output checkbox.
5. Select **non-inverted** as the Logic Output Polarity.
6. To enable ZCD interrupt detection on the rising edge, check the Enable ZCD Interrupt and Enable Positive Edge Interrupt checkbox.
7. To configure the ZCD input and output pins, expand the MPLAB® Code Configurator Pin Manager on the right side of the screen. Click the **green lock** next to ZCD1OUT and ZCD1IN to assign them as following: ZCD1OUT = PORTA(R₁), ZCD1IN = PORTA(R₂).
8. Click the **Generate Code** button in the top left corner of the center panel. This will generate a `main.c` file to the project automatically. It will also initialize the module and leave an empty `while(1)` loop for custom code entry. See [Figure 5](#) for the User Interface of ZCD in MCC and [Example 6](#) for the generated initialization code for the ZCD module.

FIGURE 5: MCC USER INTERFACE FOR ZCD



EXAMPLE 6: MCC GENERATED INITIALIZATION CODE FOR ZCD

```

void ZCD_Initialize (void)
{
    // Set the ZCD to the options selected in the User Interface
    // ZCD1EN enabled; ZCD1POL not inverted; ZCD1INTP enabled; ZCD1OE
    enabled; ZCD1INTN disabled;
    ZCD1CON = 0xC2;

    // Clearing IF flag before enabling the interrupt.
    PIR3bits.ZCDIF = 0;

    // Enabling ZCD interrupt.
    PIE3bits.ZCDIE = 1;
}

void ZCD_ISR(void)
{
    // Clear the ZCD interrupt flag
    PIR3bits.ZCDIF = 0;
}

void PIN_MANAGER_Initialize(void)
{
    LATA = 0x00;
    TRISA = 0x3D;
    ANSELA = 0x15;
    WPUA = 0x00;
    LATC = 0x00;
    TRISC = 0x3F;
    ANSELC = 0x0F;
    WPUC = 0x00;
    OPTION_REGbits.nWPUEN = 0x01;
}

```

CONCLUSION

This technical brief covers the Zero-Cross Detection (ZCD) module in PIC microcontrollers. It provides ways on how to implement and interface the modules along with the external components needed. The calculations of external component values such as the current-limiting resistor and the external biasing resistor are also provided in this technical brief to alter the detection threshold to any set point. The configuration of ZCD is demonstrated using the MPLAB Code Configurator (MCC). An example initialization code is generated using the MCC, as well.

Note the following details of the code protection feature on Microchip devices:

- Microchip products meet the specification contained in their particular Microchip Data Sheet.
- Microchip believes that its family of products is one of the most secure families of its kind on the market today, when used in the intended manner and under normal conditions.
- There are dishonest and possibly illegal methods used to breach the code protection feature. All of these methods, to our knowledge, require using the Microchip products in a manner outside the operating specifications contained in Microchip's Data Sheets. Most likely, the person doing so is engaged in theft of intellectual property.
- Microchip is willing to work with the customer who is concerned about the integrity of their code.
- Neither Microchip nor any other semiconductor manufacturer can guarantee the security of their code. Code protection does not mean that we are guaranteeing the product as "unbreakable."

Code protection is constantly evolving. We at Microchip are committed to continuously improving the code protection features of our products. Attempts to break Microchip's code protection feature may be a violation of the Digital Millennium Copyright Act. If such acts allow unauthorized access to your software or other copyrighted work, you may have a right to sue for relief under that Act.

Information contained in this publication regarding device applications and the like is provided only for your convenience and may be superseded by updates. It is your responsibility to ensure that your application meets with your specifications. MICROCHIP MAKES NO REPRESENTATIONS OR WARRANTIES OF ANY KIND WHETHER EXPRESS OR IMPLIED, WRITTEN OR ORAL, STATUTORY OR OTHERWISE, RELATED TO THE INFORMATION, INCLUDING BUT NOT LIMITED TO ITS CONDITION, QUALITY, PERFORMANCE, MERCHANTABILITY OR FITNESS FOR PURPOSE. Microchip disclaims all liability arising from this information and its use. Use of Microchip devices in life support and/or safety applications is entirely at the buyer's risk, and the buyer agrees to defend, indemnify and hold harmless Microchip from any and all damages, claims, suits, or expenses resulting from such use. No licenses are conveyed, implicitly or otherwise, under any Microchip intellectual property rights.

Trademarks

The Microchip name and logo, the Microchip logo, dsPIC, FlashFlex, flexPWR, JukeBlox, KEELOQ, KEELOQ logo, Klear, LANCheck, MediaLB, MOST, MOST logo, MPLAB, OptoLyzer, PIC, PICSTART, PIC³² logo, RightTouch, SpyNIC, SST, SST Logo, SuperFlash and UNI/O are registered trademarks of Microchip Technology Incorporated in the U.S.A. and other countries.

The Embedded Control Solutions Company and mTouch are registered trademarks of Microchip Technology Incorporated in the U.S.A.

Analog-for-the-Digital Age, BodyCom, chipKIT, chipKIT logo, CodeGuard, dsPICDEM, dsPICDEM.net, ECAN, In-Circuit Serial Programming, ICSP, Inter-Chip Connectivity, KlearNet, KlearNet logo, MiWi, MPASM, MPF, MPLAB Certified logo, MPLIB, MPLINK, MultiTRAK, NetDetach, Omniscient Code Generation, PICDEM, PICDEM.net, PICkit, PICtail, RightTouch logo, REAL ICE, SQI, Serial Quad I/O, Total Endurance, TSHARC, USBCheck, VariSense, ViewSpan, WiperLock, Wireless DNA, and ZENA are trademarks of Microchip Technology Incorporated in the U.S.A. and other countries.

SQTP is a service mark of Microchip Technology Incorporated in the U.S.A.

Silicon Storage Technology is a registered trademark of Microchip Technology Inc. in other countries.

GestIC is a registered trademarks of Microchip Technology Germany II GmbH & Co. KG, a subsidiary of Microchip Technology Inc., in other countries.

All other trademarks mentioned herein are property of their respective companies.

© 2015, Microchip Technology Incorporated, Printed in the U.S.A., All Rights Reserved.

ISBN: 978-1-63277-462-0

QUALITY MANAGEMENT SYSTEM
CERTIFIED BY DNV
= ISO/TS 16949 =

Microchip received ISO/TS-16949:2009 certification for its worldwide headquarters, design and wafer fabrication facilities in Chandler and Tempe, Arizona; Gresham, Oregon and design centers in California and India. The Company's quality system processes and procedures are for its PIC® MCUs and dsPIC® DSCs, KEELOQ® code hopping devices, Serial EEPROMs, microperipherals, nonvolatile memory and analog products. In addition, Microchip's quality system for the design and manufacture of development systems is ISO 9001:2000 certified.

Worldwide Sales and Service

AMERICAS

Corporate Office
2355 West Chandler Blvd.
Chandler, AZ 85224-6199
Tel: 480-792-7200
Fax: 480-792-7277
Technical Support:
<http://www.microchip.com/support>
Web Address:
www.microchip.com

Atlanta
Duluth, GA
Tel: 678-957-9614
Fax: 678-957-1455

Austin, TX
Tel: 512-257-3370

Boston
Westborough, MA
Tel: 774-760-0087
Fax: 774-760-0088

Chicago
Itasca, IL
Tel: 630-285-0071
Fax: 630-285-0075

Cleveland
Independence, OH
Tel: 216-447-0464
Fax: 216-447-0643

Dallas
Addison, TX
Tel: 972-818-7423
Fax: 972-818-2924

Detroit
Novi, MI
Tel: 248-848-4000

Houston, TX
Tel: 281-894-5983
Indianapolis

Noblesville, IN
Tel: 317-773-8323
Fax: 317-773-5453

Los Angeles
Mission Viejo, CA
Tel: 949-462-9523
Fax: 949-462-9608

New York, NY
Tel: 631-435-6000

San Jose, CA
Tel: 408-735-9110

Canada - Toronto
Tel: 905-673-0699
Fax: 905-673-6509

ASIA/PACIFIC

Asia Pacific Office
Suites 3707-14, 37th Floor
Tower 6, The Gateway
Harbour City, Kowloon

Hong Kong
Tel: 852-2943-5100
Fax: 852-2401-3431

Australia - Sydney
Tel: 61-2-9868-6733
Fax: 61-2-9868-6755

China - Beijing
Tel: 86-10-8569-7000
Fax: 86-10-8528-2104

China - Chengdu
Tel: 86-28-8665-5511
Fax: 86-28-8665-7889

China - Chongqing
Tel: 86-23-8980-9588
Fax: 86-23-8980-9500

China - Dongguan
Tel: 86-769-8702-9880

China - Hangzhou
Tel: 86-571-8792-8115
Fax: 86-571-8792-8116

China - Hong Kong SAR
Tel: 852-2943-5100
Fax: 852-2401-3431

China - Nanjing
Tel: 86-25-8473-2460
Fax: 86-25-8473-2470

China - Qingdao
Tel: 86-532-8502-7355
Fax: 86-532-8502-7205

China - Shanghai
Tel: 86-21-5407-5533
Fax: 86-21-5407-5066

China - Shenyang
Tel: 86-24-2334-2829
Fax: 86-24-2334-2393

China - Shenzhen
Tel: 86-755-8864-2200
Fax: 86-755-8203-1760

China - Wuhan
Tel: 86-27-5980-5300
Fax: 86-27-5980-5118

China - Xian
Tel: 86-29-8833-7252
Fax: 86-29-8833-7256

ASIA/PACIFIC

China - Xiamen
Tel: 86-592-2388138
Fax: 86-592-2388130

China - Zhuhai
Tel: 86-756-3210040
Fax: 86-756-3210049

India - Bangalore
Tel: 91-80-3090-4444
Fax: 91-80-3090-4123

India - New Delhi
Tel: 91-11-4160-8631
Fax: 91-11-4160-8632

India - Pune
Tel: 91-20-3019-1500

Japan - Osaka
Tel: 81-6-6152-7160
Fax: 81-6-6152-9310

Japan - Tokyo
Tel: 81-3-6880-3770
Fax: 81-3-6880-3771

Korea - Daegu
Tel: 82-53-744-4301
Fax: 82-53-744-4302

Korea - Seoul
Tel: 82-2-554-7200
Fax: 82-2-558-5932 or
82-2-558-5934

Malaysia - Kuala Lumpur
Tel: 60-3-6201-9857
Fax: 60-3-6201-9859

Malaysia - Penang
Tel: 60-4-227-8870
Fax: 60-4-227-4068

Philippines - Manila
Tel: 63-2-634-9065
Fax: 63-2-634-9069

Singapore
Tel: 65-6334-8870
Fax: 65-6334-8850

Taiwan - Hsin Chu
Tel: 886-3-5778-366
Fax: 886-3-5770-955

Taiwan - Kaohsiung
Tel: 886-7-213-7828

Taiwan - Taipei
Tel: 886-2-2508-8600
Fax: 886-2-2508-0102

Thailand - Bangkok
Tel: 66-2-694-1351
Fax: 66-2-694-1350

EUROPE

Austria - Wels
Tel: 43-7242-2244-39
Fax: 43-7242-2244-393

Denmark - Copenhagen
Tel: 45-4450-2828
Fax: 45-4485-2829

France - Paris
Tel: 33-1-69-53-63-20
Fax: 33-1-69-30-90-79

Germany - Dusseldorf
Tel: 49-2129-3766400

Germany - Munich
Tel: 49-89-627-144-0
Fax: 49-89-627-144-44

Germany - Pforzheim
Tel: 49-7231-424750

Italy - Milan
Tel: 39-0331-742611
Fax: 39-0331-466781

Italy - Venice
Tel: 39-049-7625286

Netherlands - Drunen
Tel: 31-416-690399
Fax: 31-416-690340

Poland - Warsaw
Tel: 48-22-3325737

Spain - Madrid
Tel: 34-91-708-08-90
Fax: 34-91-708-08-91

Sweden - Stockholm
Tel: 46-8-5090-4654

UK - Wokingham
Tel: 44-118-921-5800
Fax: 44-118-921-5820